

Close-Coupled Waste Pulping System



Description

Standard SOMAT® Model SPC-75S HT high tank, close-coupled pulper and Hydra-Extractor® with hinged lid and limit switch, water flushed feed tray, 3 HP recirculating pump, chemical additive pump, valve package, Som-A-Trol® control panel with water level control, push button station, and discharge chute with limit switch.

Benefits

- As much as 8 to 1 (87.5%) volume reduction
- Reduced labor cost
- Better sanitation
- Water conservation
- Improved operator morale
- Reduced silverware loss
- Processes a wide variety of waste

Operation: Foodservice waste enters the pulping tank via the feed tray where it mixes with water, is processed and made into a slurry. The slurry, consisting of 5% solids and 95% water, is automatically transported through a pipeline to the Hydra-Extractor®, where water is removed and the resultant semi-dry pulp is discharged into a haul-away container. The extracted water is recovered and returned to the pulping tank for re-use.

Somat equipment provides an economic and efficient answer to cutting the high and ever increasing costs associated with waste handling. Manufactured by Somat Company of Lancaster, Pennsylvania, originators of waste pulping systems and specialists in waste reduction technology.

Approval:

Item No _____

SOMAT Model: **SPC-75S**

Technical Specifications

Pulper: 30" diameter, 39.5" high polished stainless steel tank with water flushed feed tray, hinged lid with limit switch, 3/8" thick stainless steel slurry chamber, 7-1/2 HP TEFC direct drive motor, internal junk box and cutting mechanism, HyPoint cutting mechanism, stainless steel, consists of 1 piece security ring with 3 stationary, replaceable top cutters and impeller with 2 replaceable rotating cutters.

Hydra-Extractor®: Rigid stainless steel weldment with stainless steel legs, head assembly with 2 HP TEFC drive motor mounted to a 20:1 gear reducer, 17" long stainless steel discharge chute with limit switch, 3 HP TEFC recirculating pump and chemical additive pump. Water extracting mechanism consists of 6" diameter stainless steel screw with nylon brush edge, stainless steel plug cutter and matching 6" diameter reinforced stainless steel screen, automatic rinse system with automatic shutdown timer.

Valve Package: All valves required for proper operation (fresh water, tray flush and drain lines).

Som-A-Trol® (Electrical Control Panel): UL approved. Includes all necessary electrical components prewired to a terminal strip; water level control and push button station, in a NEMA 4 stainless steel enclosure.

Options Available:

- Feed trough connection
- Feed tray cover
- Special electrical characteristics
- Under Dish Table unit

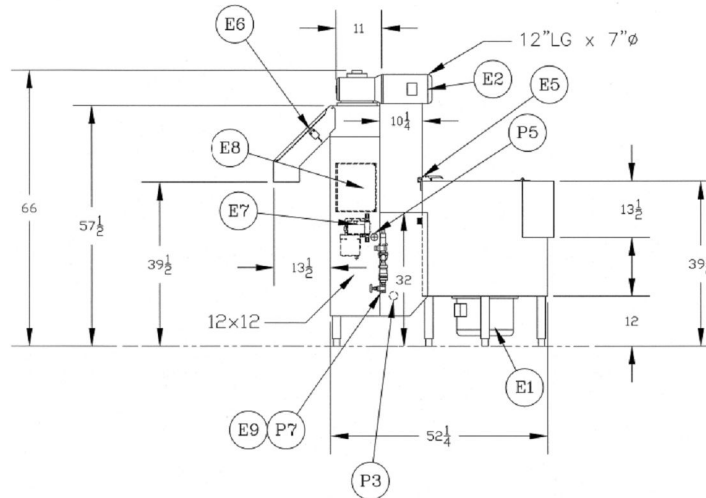
Electrical Characteristics: 208/230/460 volt, 3 Phase, 60 Hertz

Capacity: 1250 pounds per hour of foodservice waste mix, consisting of food scraps, plastics, milk cartons, paper, aluminum foil and cardboard.

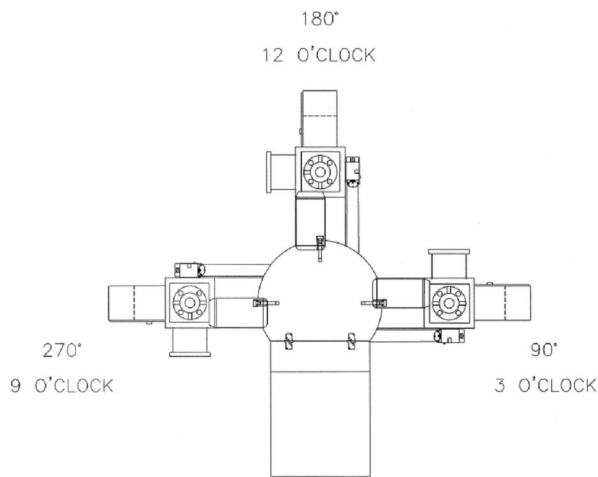
Finish: All exterior surfaces, except where polished stainless steel, are prime coated and finished with two coats of enamel paint.

Equipment only is supplied by SOMAT Company; installation, piping and wiring not included.

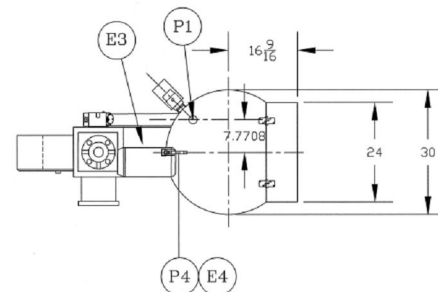
Close Couple Pulping System



SPC-75S (W/ TRAY ADAPTER)
ELEVATION VIEW



OPTIONAL SPC-75S LAYOUT CONFIGURATIONS



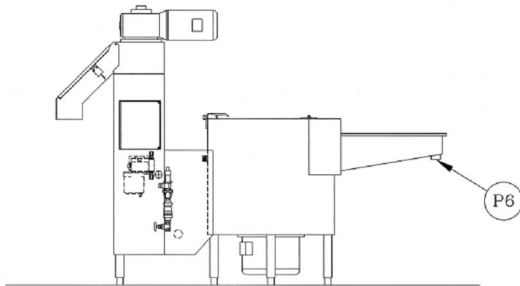
SPC-75S (W/ TRAY ADAPTER)
PLAN VIEW

Somat® Model SPC-75S

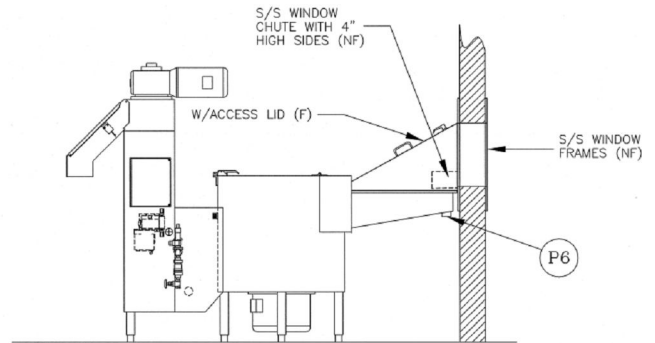
Utility Connections

E1- Pulper Drive Motor	P1- Drain Valve Outlet (MOV)	(2")
E2- Extractor Drive Motor	P2- N/A	
E3- Return Pump Motor	P3- Return Water Outlet	(2")
E4- Fresh Water Solenoid	P4- Fresh Water Inlet	(1/2")
E5- Pulper Limit Switch	P5- Overflow Outlet	(1 1/2")
E6- Chute Limit Switch	P6- Tray Flush (see next page)	(1 1/2")
E7- Chemical Additive Pump	P7- Autorinse Inlet	(1 1/2")
E8- Junction Enclosure		
E9- Autorinse Solenoid		

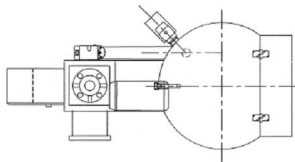
Close Couple Pulping System



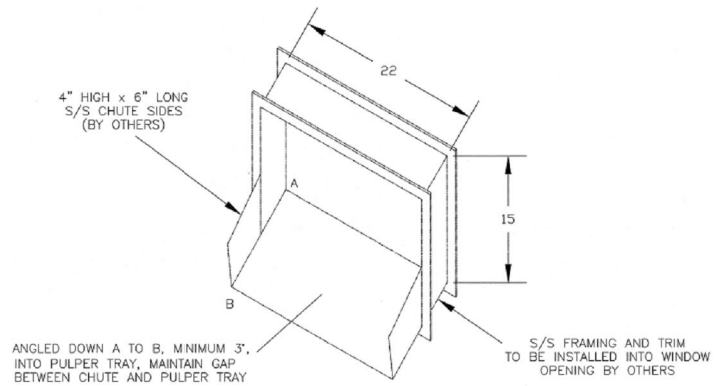
SPC-75S (W/ TRAY)
ELEVATION VIEW



SPC-75S (W/ TRAY & HOOD)
ELEVATION VIEW



SPC-75S (W/ TRAY ADAPTER)
PLAN VIEW



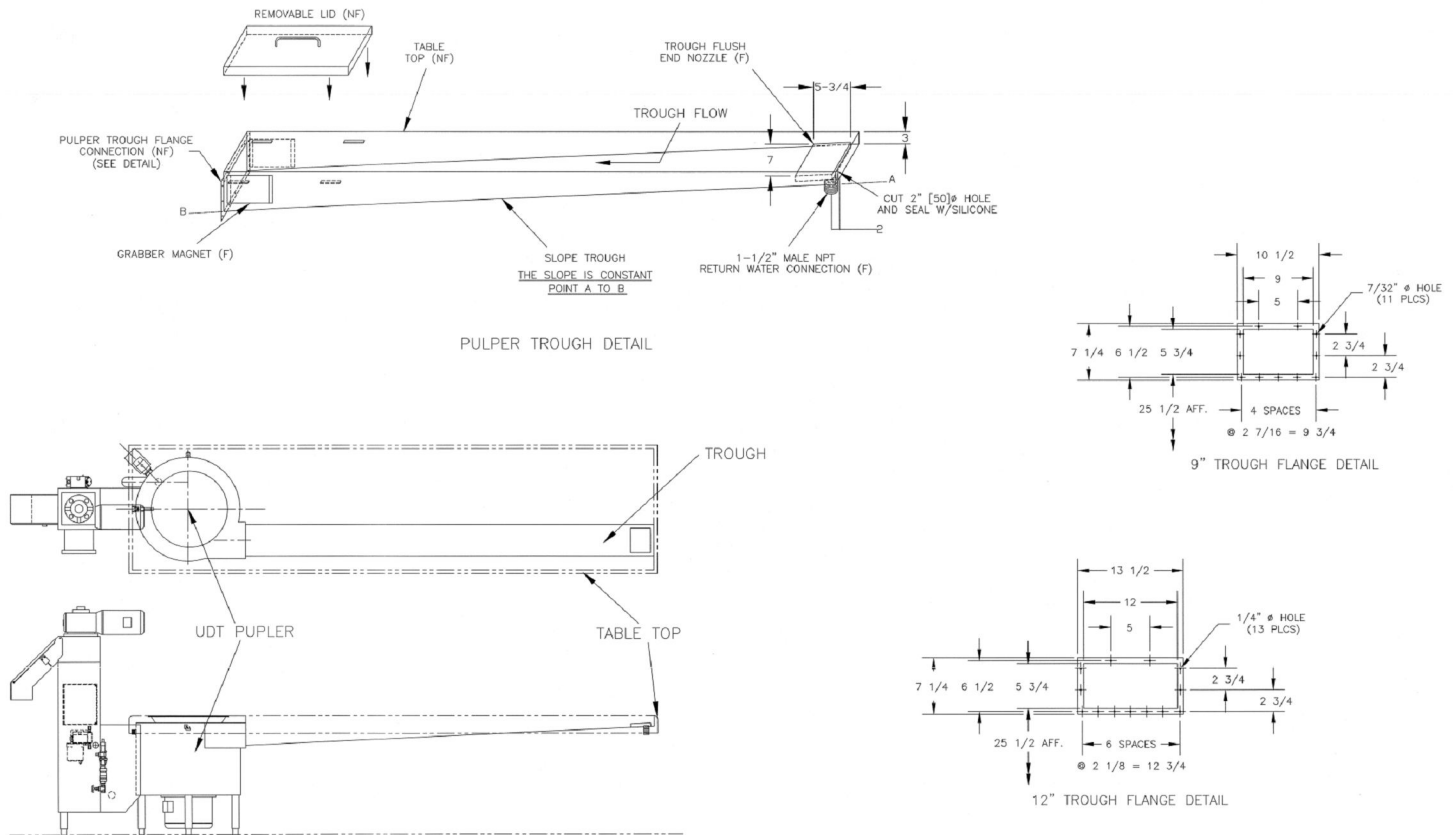
TYPICAL PASS THRU WINDOW DETAIL

Somat® Model SPC-75S HT

Dimensions

Total Height: 66" (1677mm)	Equipment weight: 900 lbs. (408kg)
Tank Height: 39.5" (1003.3mm)	Operating weight: 1155 lbs. (524kg)
Length: 67.25" (1709)	Crated weight: 1175 lbs. (533kg)
Width: 30" (762mm)	Crated volume: 167 cu. ft.

Close Couple Pulping System



Somat® Model SPC-75S UDT

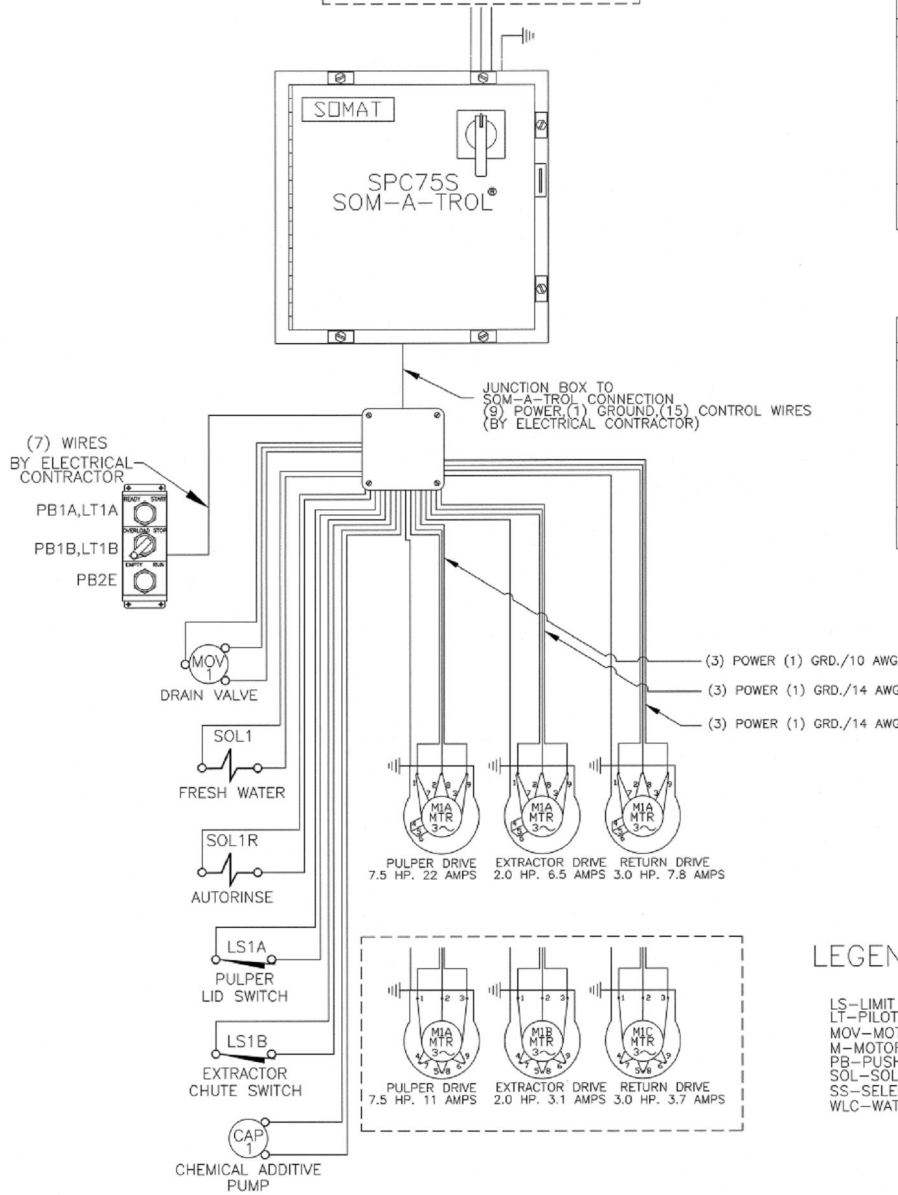
Dimensions

Total Height: 66" (1677mm)	Equipment weight: 900 lbs. (408kg)
Tank Height: 32" (813mm)	Operating weight: 1155 lbs. (524kg)
Length: 67.25" (1709mm)	Crated weight: 1175 lbs. (533kg)
Width: 30" (762mm)	Crated volume: 167 cu. ft.

Close Couple Pulping System

WIRING DIAGRAM

CUSTOMER POWER SUPPLY
(BY ELECTRICAL CONTRACTOR)
208V-3Ø-60Hz-45 AMPS
[460V-3Ø-60Hz-25 AMPS]



WIRE SIZING GUIDE		
DEVICE	WIRE SIZE	TYPE
SOM-A-TROL CONTROL LOGIC (110V) (LIMIT SWITCH) (SOL VALVE, ETC.)	18 AWG	THW-75°C
3HP RETURN PUMP MOTOR @ 208/230V	14 AWG	THW-75°C
2HP EXTRTR DRIVE MOTOR @ 208/230V	14 AWG	THW-75°C
7.5HP PULPER DRIVE MOTOR @ 208/230V	10 AWG	THW-75°C

USE NEXT SIZE AWG FOR RUNS OVER 150 FEET

WIRE SIZING GUIDE		
DEVICE	WIRE SIZE	TYPE
SOM-A-TROL CONTROL LOGIC (LIMIT SWITCH) (SOL VALVE, ETC.)	18 AWG	THW-75°C
3HP RETURN PUMP MOTOR @ 460V	14 AWG	THW-75°C
2HP EXTRTR DRIVE MOTOR @ 460V	14 AWG	THW-75°C
7.5HP PULPER DRIVE MOTOR @ 460V	14 AWG	THW-75°C

USE NEXT SIZE AWG FOR RUNS OVER 150 FEET (46 METERS)

LEGEND

- LS-LIMIT SWITCH
- LT-PILOT LIGHT (L.E.D.)
- MOV-MOTORIZED VALVE
- M-MOTOR
- PB-PUSHBUTTON
- SOL-SOLENOID VALVE
- SS-SELECTOR SWITCH
- WLC-WATER LEVEL CONTROL

ALL PANELS TO BE OF STAINLESS STEEL CONSTRUCTION.

Other Utility Requirements

Fresh Water- 3 gpm@30psig, ½"NTP (approximate operational usage 60-120gph)

Drain- 3" minimum floor sink, with stainless steel removable basket recommended