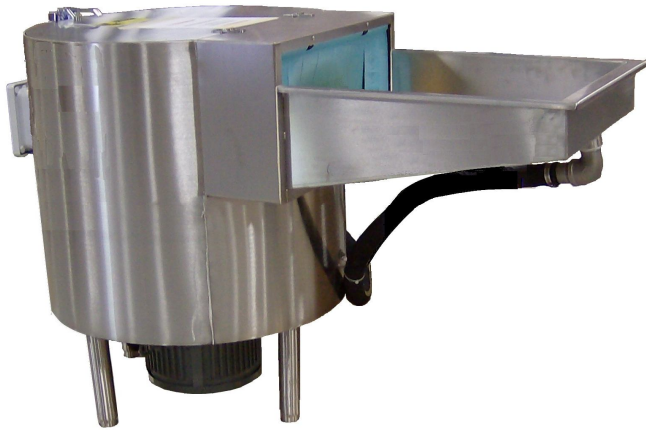


# somat®

## Remote Waste Pulping System



### Description

Standard SOMAT® Model SP-75S HT high tank pulper, hinged lid with limit switch, water flushed feed tray, 3 HP or 5 HP slurry pump, valve package, Som-A-Trol® control panel with water level control, push button station.

### Benefits

- As much as 8 to 1 (87.5%) volume reduction
- Reduced labor cost
- Better sanitation
- Water conservation
- Improved operator morale
- Reduced silverware loss
- Processes a wide variety of waste

**Operation:** Foodservice waste enters the pulping tank via the feed tray where it mixes with water, is processed and made into a slurry. The slurry, consisting of 5% solids and 95% water, is automatically transported through a pipeline to the Hydra-Extractor®, where water is removed and the resultant semi-dry pulp is discharged into a haul-away container. The extracted water is recovered and returned to the pulping tank for re-use.

Somat equipment provides an economic and efficient answer to cutting the high and ever increasing costs associated with waste handling. Manufactured by Somat Company of Lancaster, Pennsylvania, originators of waste pulping systems and specialists in waste reduction technology.

### Approval:

Item No \_\_\_\_\_

SOMAT Model: **SP-75S**

### Technical Specifications

**Pulper:** 30" diameter, 39.5" high polished stainless steel tank with water flushed feed tray, hinged lid with limit switch, 3/8" thick stainless steel slurry chamber, 7 ½ HP TEFC direct drive motor, internal junk box and cutting mechanism, HyPoint cutting mechanism, stainless steel, consists of 1 piece security ring with 3 stationary, replaceable top cutters and impeller with 2 replaceable rotating cutters.

**Valve Package:** All valves required for proper operation (fresh water, tray flush and drain lines).

**Som-A-Trol® (Electrical Control Panel):** UL approved. Includes all necessary electrical components prewired to a terminal strip; water level control and push button station, in a NEMA 4 stainless steel enclosure.

### Options Available:

- Feed trough connection
- Feed tray cover
- Special electrical characteristics
- Under Dish Table unit

### Special Requirements:

- Dual water level control and motor operated valve with controls. Required if more than one pulper operating with a single Hydra-Extractor.
- Stainless Steel Dam. Required when pulper is located higher (one level minimum) than the Hydra-Extractor.

**Electrical Characteristics:** 208/230/460 volt, 3 Phase, 60 Hertz

**Capacity:** 1250 pounds per hour of foodservice waste mix, consisting of food scraps, plastics, milk cartons, paper, aluminum foil and cardboard.

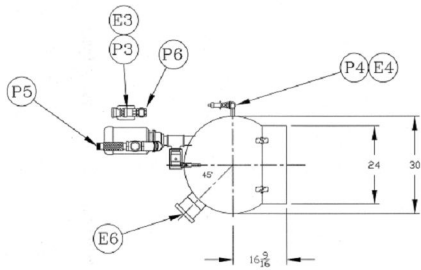
**Finish:** All exterior surfaces, except where polished stainless steel, are prime coated and finished with two coats of enamel paint.

Equipment only is supplied by SOMAT Company; installation, piping and wiring not included.

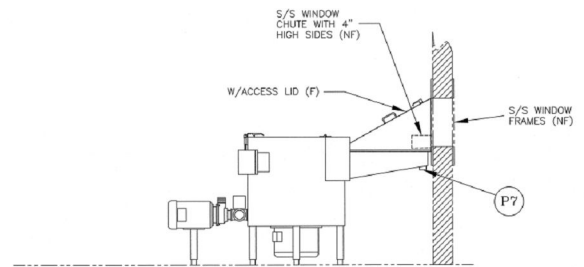


Somat Company  
Division of ITW Food Equipment Group LLC  
165 Independence Court  
Lancaster, PA 17601 USA  
Tel: 717-397-5100 Fax: 717-291-0877  
1-800-237-6628  
www.somatcompany.com

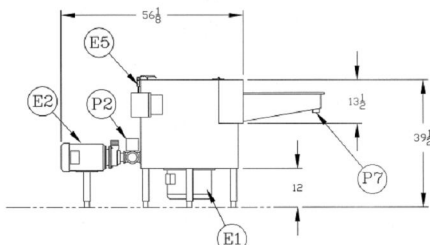
### Remote Pulping System



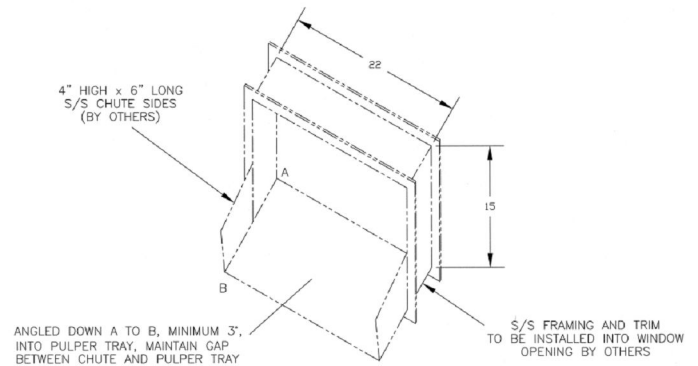
SPC-75S (W/ TRAYADAPTER)  
PLAN VIEW



SPC-75S (W/ TRAY & HOOD)  
ELEVATION VIEW



SP-75S (W/ TRAY)  
ELEVATION VIEW



TYPICAL PASS THRU WINDOW DETAIL

## Somat® Model SP-75S HT

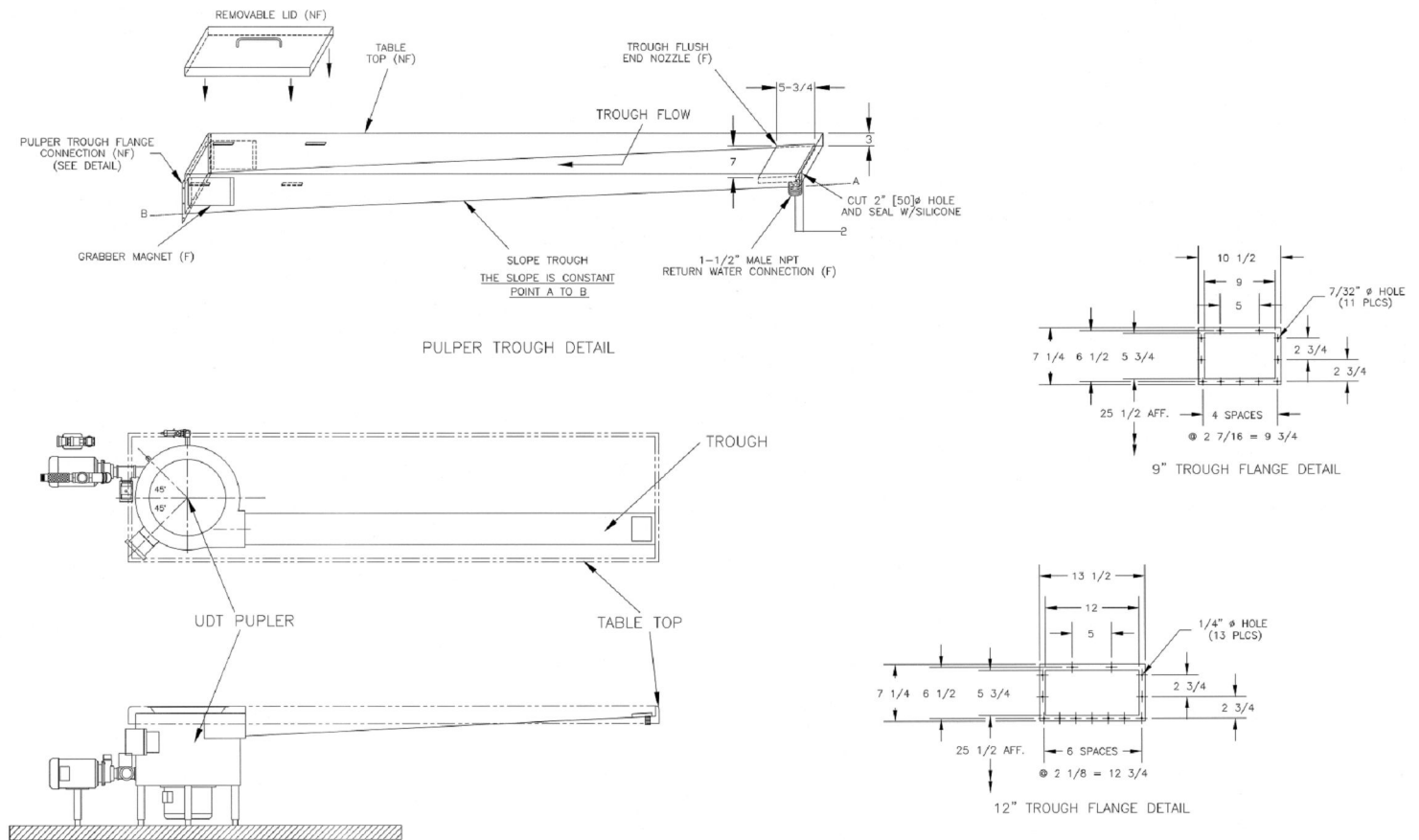
### Utility Connections

<b>E1-</b> Pulper Drive Motor	<b>P1-</b> N/A
<b>E2-</b> Slurry Pump Motor	<b>P2-</b> Drain Valve Outlet (MOV) (2")
<b>E3-</b> Return Line MOV	<b>P3-</b> Return Water Inlet (2")
<b>E4-</b> Fresh Water Solenoid	<b>P4-</b> Fresh Water Inlet (3/4")
<b>E5-</b> Limit Switch	<b>P5-</b> Slurry Outlet (2")
<b>E6-</b> Junction Enclosure	<b>P6-</b> Return Water To Tray (1 1/2")
	<b>P7-</b> Tray Flush (1 1/2")

### Dimensions

<b>Tank Height:</b> 39.5" (1004mm)	<b>Equipment weight:</b> 525 lbs. (238 kg)
<b>Length:</b> 56" (1423mm) (Excluding tray / trough)	<b>Operating weight:</b> 745 lbs. (338 kg)
<b>Width:</b> 30" (762mm) (Excluding external piping)	<b>Crated weight:</b> 850 lbs. (386 kg)
	<b>Crated volume:</b> 85 cu. ft.

### Remote Pulping System



## Somat® Model SP-75S UDT

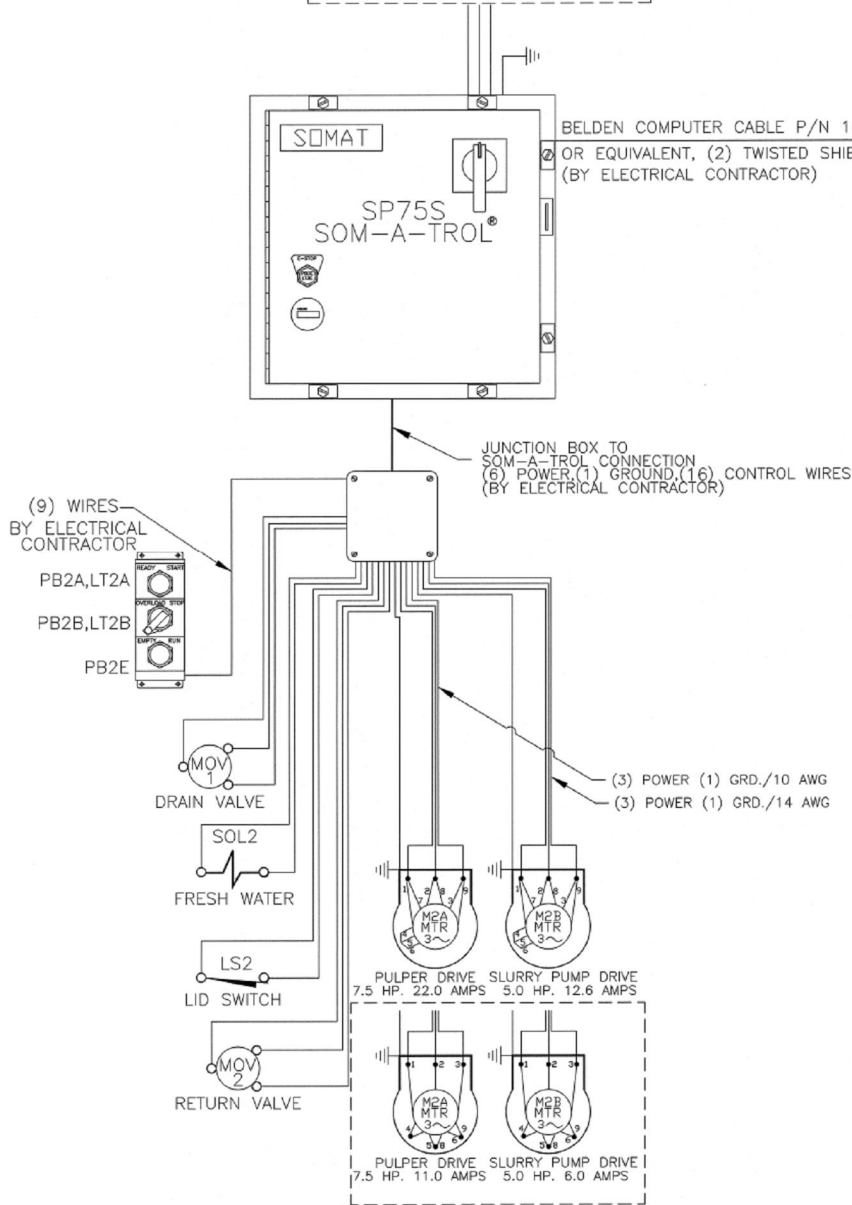
### Dimensions

<b>Tank Height:</b> 32" (813mm)	<b>Equipment weight:</b> 525 lbs. (238 kg)
<b>Length:</b> 56" (1423mm) (Excluding tray / trough)	<b>Operating weight:</b> 745 lbs. (338 kg)
<b>Width:</b> 30" (762mm) (Excluding external piping)	<b>Crated weight:</b> 850 lbs. (386 kg)
	<b>Crated volume:</b> 85 cu. ft.

### Remote Pulping System

#### WIRING DIAGRAM

CUSTOMER POWER SUPPLY  
(BY ELECTRICAL CONTRACTOR)  
208V-3Ø-60Hz-45 AMPS  
460V-3Ø-60Hz-20 AMPS



WIRE SIZING GUIDE		
DEVICE	WIRE SIZE	TYPE
SOM-A-TROL CONTROL LOGIC (LIMIT SWITCH) (SOL VALVE, ETC.)	18 AWG	THW-75°C
5.0HP RETURN PUMP MOTOR @ 208/230V	14 AWG	THW-75°C
7.5HP EXTRTR DRIVE MOTOR @ 208/230V	10 AWG	THW-75°C

USE NEXT SIZE AWG FOR RUNS OVER 150 FEET (46 METERS)

WIRE SIZING GUIDE		
DEVICE	WIRE SIZE	TYPE
SOM-A-TROL CONTROL LOGIC (110V) (LIMIT SWITCH) (SOL VALVE, ETC.)	18 AWG	THW-75°C
5HP SLURRY PUMP 5HP RETURN PUMP MOTOR @ 460V	14 AWG	THW-75°C
7.5HP PULPER DRIVE 7.5HP PUMP DRIVE MOTOR @ 460V	14 AWG	THW-75°C

USE NEXT SIZE AWG FOR RUNS OVER 150 FEET (46 METERS)

#### Other Utility Requirements

**Fresh Water-** 6 gpm@30psig, ¾"NTP (approximate usage 60-120gph)

**Drain-** 3" minimum floor sink, with stainless steel removable basket recommended