

# somat®

## Remote Waste Pulping System



### Description

Standard SOMAT® Model HE-9S Hydra-Extractor® with 5 HP drive motor, 7-1/2 HP or 10 HP return pump, chemical additive pump, automatic rinse system, valve package, Som-A-Trol control panel and discharge chute with limit switch.

### Benefits

- As much as 8 to 1 (87.5%) volume reduction
- Reduced labor cost
- Better sanitation
- Water conservation
- Improved operator morale
- Reduced silverware loss
- Processes a wide variety of waste

**Operation:** Slurry, consisting of 5% solids and 95% water, is automatically transported through a pipeline after being processed in the pulper(s) to the Hydra-Extractor, where water is removed and the resultant semi-dry pulp is discharged into a haul-away container. The extracted water is recovered and returned to the pulper(s) for reuse. The capacity of the Hydra-Extractor determines how many pulpers can be designed to operate with it concurrently..

Somat equipment provides an economic and efficient answer to cutting the high and ever increasing costs associated with waste handling. Manufactured by Somat Company of Lancaster, Pennsylvania, originators of waste pulping systems and specialists in waste reduction technology.

### Approval:

Item No \_\_\_\_\_

**SOMAT Model: HE-9S  
Hydra-Extractor**

### Technical Specifications

**Hydra-Extractor:** Rigid stainless steel weldment with stainless steel stand, head assembly with 5 HP belt driven motor matched to a 25:1 gear reducer, 28" long stainless steel discharge chute with limit switch, chemical additive pump, automatic rinse system. Water extractor mechanism consists of 9" diameter stainless steel screw with nylon brush edge, stainless steel adjustable gate and matching 9" diameter reinforced stainless steel screen.

**Valve Package:** All valves required for proper operation (automatic rinse system).

**Som-A-Trol® (Electrical Control Panel):** UL approved. Includes all necessary electrical components prewired to a terminal strip in a NEMA 4 stainless steel enclosure.

### Options Available:

- Extended discharge chute (Shown)
- Hinged chute
- Extended stand
- Pulp level detector
- Special electrical characteristics

### Special Requirements:

- 10 HP or larger return pump. Determined by piping conditions.
- Water economizing tank. Required when 10 HP or larger return pump is used.
- Pulp Screw Conveyor and controls. Required to convey pulp from discharge chute to haul-away container when location of container does not permit gravity discharge.

**Electrical Characteristics:** 208/230/460 volt, 3 Phase, 60 Hertz

**Capacity:** 3,000 pounds per hour of foodservice waste mix, consisting of food scraps, plastics, milk cartons, paper, aluminum foil and cardboard.

**Finish:** All exterior surfaces, except where polished stainless steel, are prime coated and finished with two coats of enamel paint.

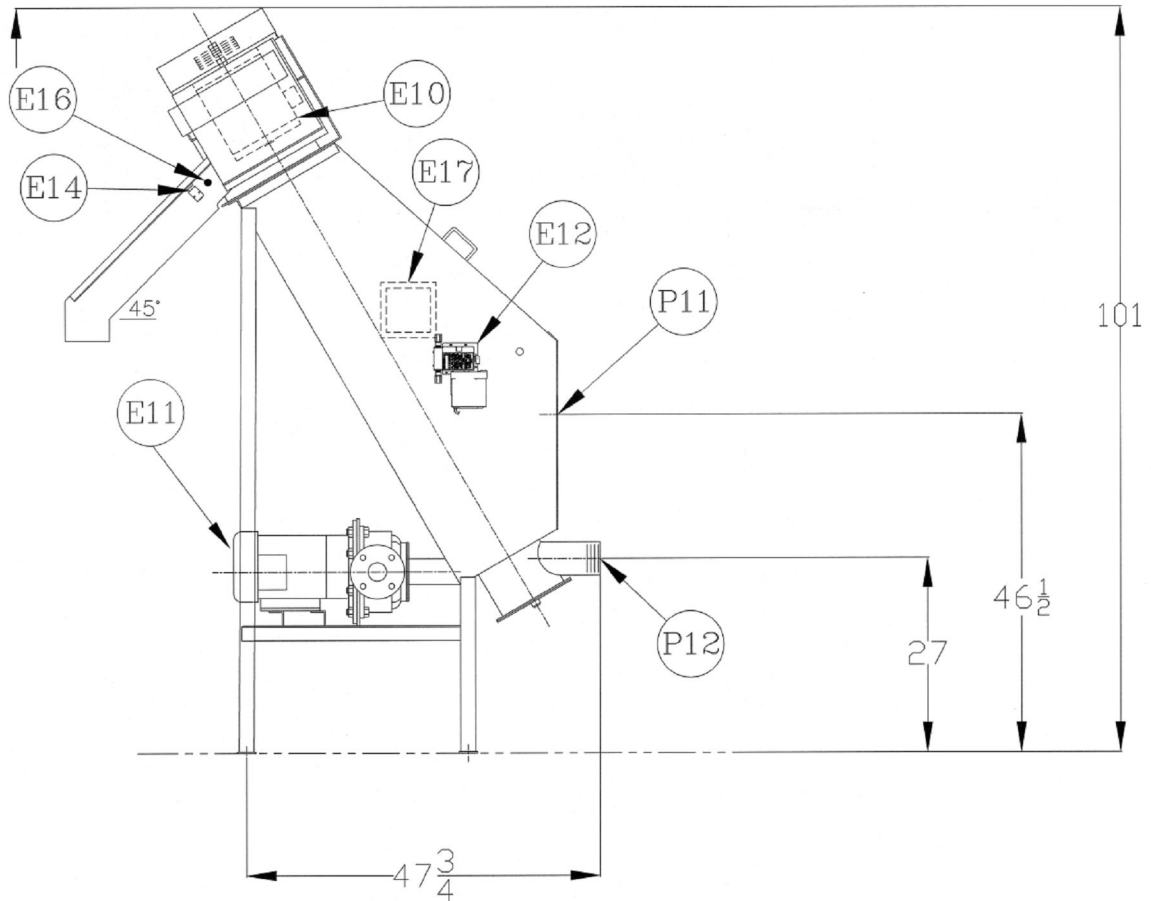
Equipment only is supplied by SOMAT Company; installation, piping and wiring not included.

Somat Company  
Division of ITW Food Equipment Group LLC  
165 Independence Court  
Lancaster, PA 17601 USA  
Tel: 717-397-5100 Fax: 717-291-0877  
1-800-237-6628  
www.somatcompany.com



## Remote Pulping System

6 MIN.



## Somat® Model HE-9S Hydra-Extractor including:

### Utility Connections

<b>E10-</b> Extractor Drive Motor (5Hp)	<b>P10-</b> Fresh Hot Water Inlet (3/4")
<b>E11-</b> Return Pump Motor (7.5Hp / 10Hp)	<b>P11-</b> Overflow Outlet (4")
<b>E12-</b> Chemical Additive Pump	<b>P12-</b> Slurry Inlet (4")
<b>E13-</b> Fresh Hot Water Solenoid	<b>P13-</b> Return Water Outlet (3")
<b>E14-</b> Chute Limit Switch	<b>P14-</b> N/A
<b>E15-</b> Autorinse MOV	<b>P15-</b> Autorinse to Drain (1 1/2")
<b>E16-</b> Pulp Level Detector	<b>P16-</b> N/A
<b>E17-</b> Junction Enclosure	

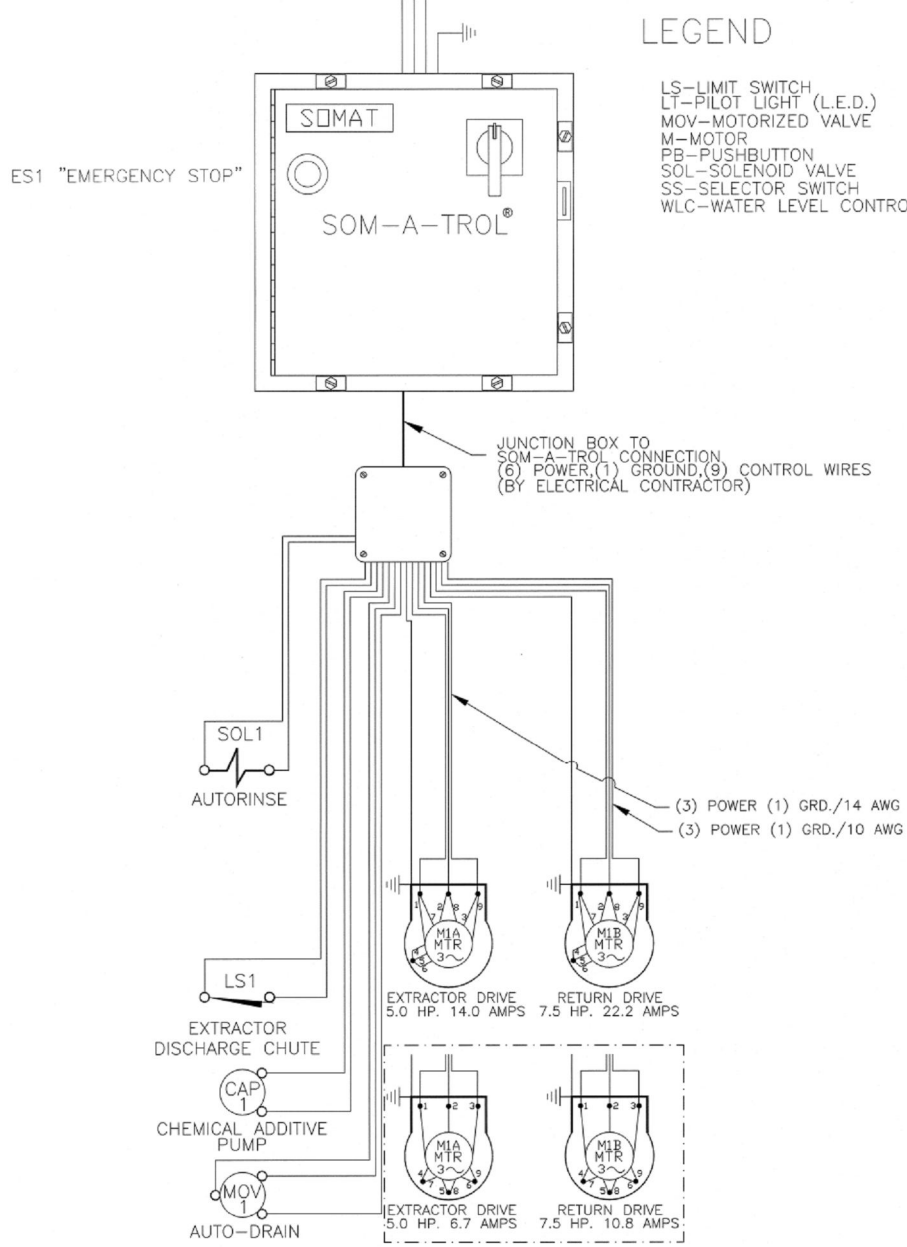
### Dimensions

<b>Height:</b> 101" (2566mm)	<b>Equipment weight:</b> 1100lbs
<b>Length:</b> 59" (1499mm) (Not including chute)	<b>Operating weight:</b> 1270lbs
<b>Width:</b> 54" (1372mm)	<b>Crated weight:</b> 1200lbs
	<b>Crated volume:</b> 128 cu. Ft.

**Remote Pulping System**

WIRING DIAGRAMS

CUSTOMER POWER SUPPLY  
(BY ELECTRICAL CONTRACTOR)  
208V-3Ø-60Hz-45 AMPS  
460V-3Ø-60Hz-25 AMPS



LEGEND  
 LS-LIMIT SWITCH  
 LT-PILOT LIGHT (L.E.D.)  
 MOV-MOTORIZED VALVE  
 M-MOTOR  
 PB-PUSHBUTTON  
 SOL-SOLENOID VALVE  
 SS-SELECTOR SWITCH  
 WLC-WATER LEVEL CONTROL

WIRE SIZING GUIDE		
DEVICE	WIRE SIZE	TYPE
SOM-A-TROL CONTROL LOGIC (LIMIT SWITCH) (SOL VALVE, ETC.)	18 AWG	THW-75°C
7.5HP RETURN PUMP MOTOR@ 208/230V	10 AWG	THW-75°C
5HP EXTRTR DRIVE MOTOR@ 208/230V	14 AWG	THW-75°C

USE NEXT SIZE AWG FOR RUNS OVER 150 FEET (46 METERS)

WIRE SIZING GUIDE		
DEVICE	WIRE SIZE	TYPE
SOM-A-TROL CONTROL LOGIC (LIMIT SWITCH) (SOL VALVE, ETC.)	18 AWG	THW-75°C
7.5HP RETURN PUMP MOTOR@ 208/230V	14 AWG	THW-75°C
5HP EXTRTR DRIVE MOTOR@ 208/230V	14 AWG	THW-75°C

USE NEXT SIZE AWG FOR RUNS OVER 150 FEET (46 METERS)

**Somat® Model HE-9S Hydra-Extractor including:**

**Other Utility Requirements**

- Fresh Hot Water-** 6 gpm @ 45 psig, 3/4" NPT (approximate usage 180 gallons/cycle)
- Drain-** 6" minimum floor sink, with stainless steel removable basket recommended