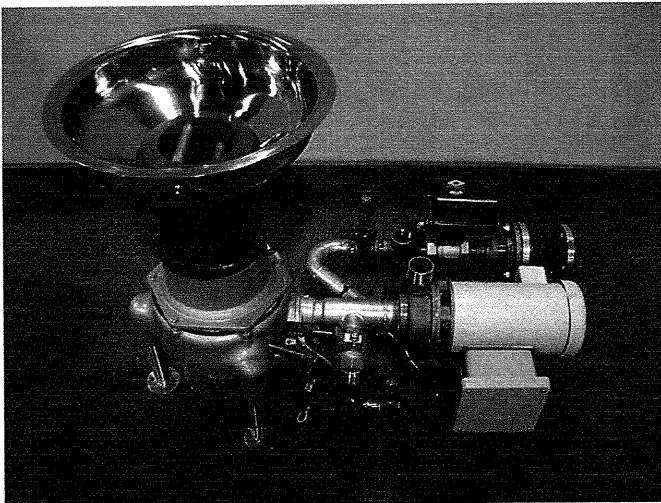


# somat®

## Remote Waste Pulping System



### Description

Standard SOMAT Model D-5 table mounted disposer, 18" stainless steel diameter bowl with disposer saver, 3 or 5 HP slurry pump, valve package, Som-A-Trol® control panel, push button station

#### Benefits

- As much as 8 to 1 (87.5%) volume reduction
- Reduced labor cost
- Better sanitation
- Water conservation
- Improved operator morale

**Operation:** Foodservice waste enters the disposer via the bowl where it mixes with water, is processed and made into a slurry. The slurry, consisting of 5% solids and 95% water, is automatically transported through a pipeline to the Hydra-Extractor®, where water is removed and the resultant semi-dry pulp is discharged into a haul-away container. The extracted water is recovered and returned to the pulping tank for re-use.

Somat equipment provides an economic and efficient answer to cutting the high and ever increasing costs associated with waste handling. Manufactured by Somat Company of Lancaster, Pennsylvania, originators of waste pulping systems and specialists in waste reduction technology.

#### Approval:

Item No \_\_\_\_\_

SOMAT Model: **D-5 Disposer**

### Technical Specifications

**Disposer:** 5 HP disposer. Basic body components are cast gray iron, machined, primed, and painted. Each D-5 has a 10" diameter rotor with two bolt-on reversible impact bars and sizing ring that are cast ductile iron, machined, balanced and heat treated. The waste chamber design permits dual directional operation when used with reversing control or switch, doubling the life of the shattering mechanism. Regular waste chamber come with a 7" throat. The waste chamber is accessible by means of a cast aluminum lid having a 7" diameter throat opening. Four quick-release head clamps allow this lid to be easily removed. The disposer connects to the cone assembly by means of a neoprene sleeve and two stainless steel clamps. This sleeve can be cut from a maximum 6" length down to a minimum of 1" to accommodate bowl/sink height needs. This sleeve also hinders the transfer of vibrations from the disposer to the bowl/sink. Disposers are available with an optional 8" offset waste chamber for both cone and sink attachments, allowing for maximum space conservation. The disposer's stainless steel legs and feet are adjustable from 0"-2".

**Valve Package:** Prepipd valve package assemblies to include all valves required for proper operation.

**Som-A-Trol® (Electrical Control Panel):** UL approved, Includes all necessary power, control and water level components prewired to a terminal strip. Push button station in a NEMA 4 stainless steel enclosure

#### Options Available:

- Sink adaptation
- Offset design
- Special electrical characteristics

**Electrical Characteristics:** 208/230/460 volt, 3 Phase, 60 Hertz

**Capacity:** 400 pounds per hour of food waste only.

**Finish:** All cast parts are powder coated.

Equipment only is supplied by SOMAT Company; installation, piping and wiring not included.

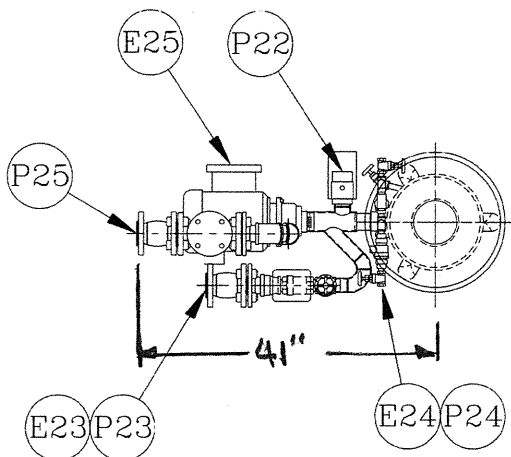
**somat®**  
waste reduction technology

Somat Company  
Division of ITW Food Equipment Group LLC  
165 Independence Court  
Lancaster, PA 17601 USA  
Tel: 717-397-5100 Fax: 717-291-0877  
1-800-237-6628  
[www.somatcompany.com](http://www.somatcompany.com)

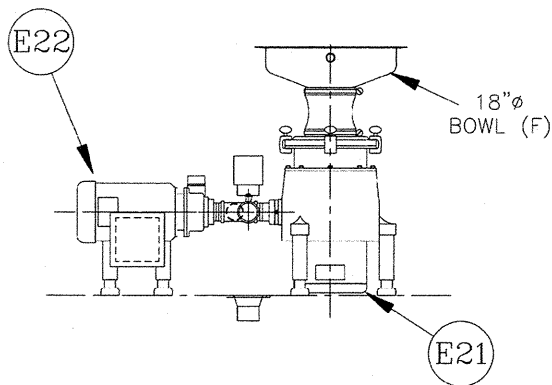
# somat®

## Remote Waste Pulping System

### SOMAT Model: D-5 Disposer



PLAN VIEW D-5 DISPOSER



ELEVATION VIEW D-5 DISPOSER

Utility rough-ins may vary with final configuration.  
Unit shown with 3 hp slurry pump

# Somat® Model D-5 Disposer:

### Utility Connections

<b>E21-</b> Disposer Drive Motor	<b>P22-</b> Drain MOV
<b>E22-</b> Slurry Pump Motor	<b>P23-</b> Return Water Inlet
<b>E23-</b> Return Water MOV	<b>P24-</b> Fresh Water Inlet
<b>E24-</b> Fresh Water Solenoid Valve	<b>P25-</b> Slurry Outlet
<b>E25-</b> Junction Enclosure	

### Dimensions

<b>Height:</b> Varies; based on job	<b>Equipment weight:</b>
<b>Length:</b>	<b>Crated weight:</b>
<b>Width:</b>	<b>Crated volume:</b>

TRADEMARK NOTICE: SOMAT, HYDRA EXTRACTOR, SOM-A-TROL, SOM-A-PRESS, SOM-A-SYSTEM are registered trademarks of Somat Company.

**Somat Company** Division of ITW Food Equipment Group LLC  
165 Lancaster, PA 17601 USA  
Tel: 717-397-5100 800-237-6628  
Fax: 717-291-08776/14/05  
[www.somatcompany.com](http://www.somatcompany.com)

SOMAT reserves the right to change specifications without notice.

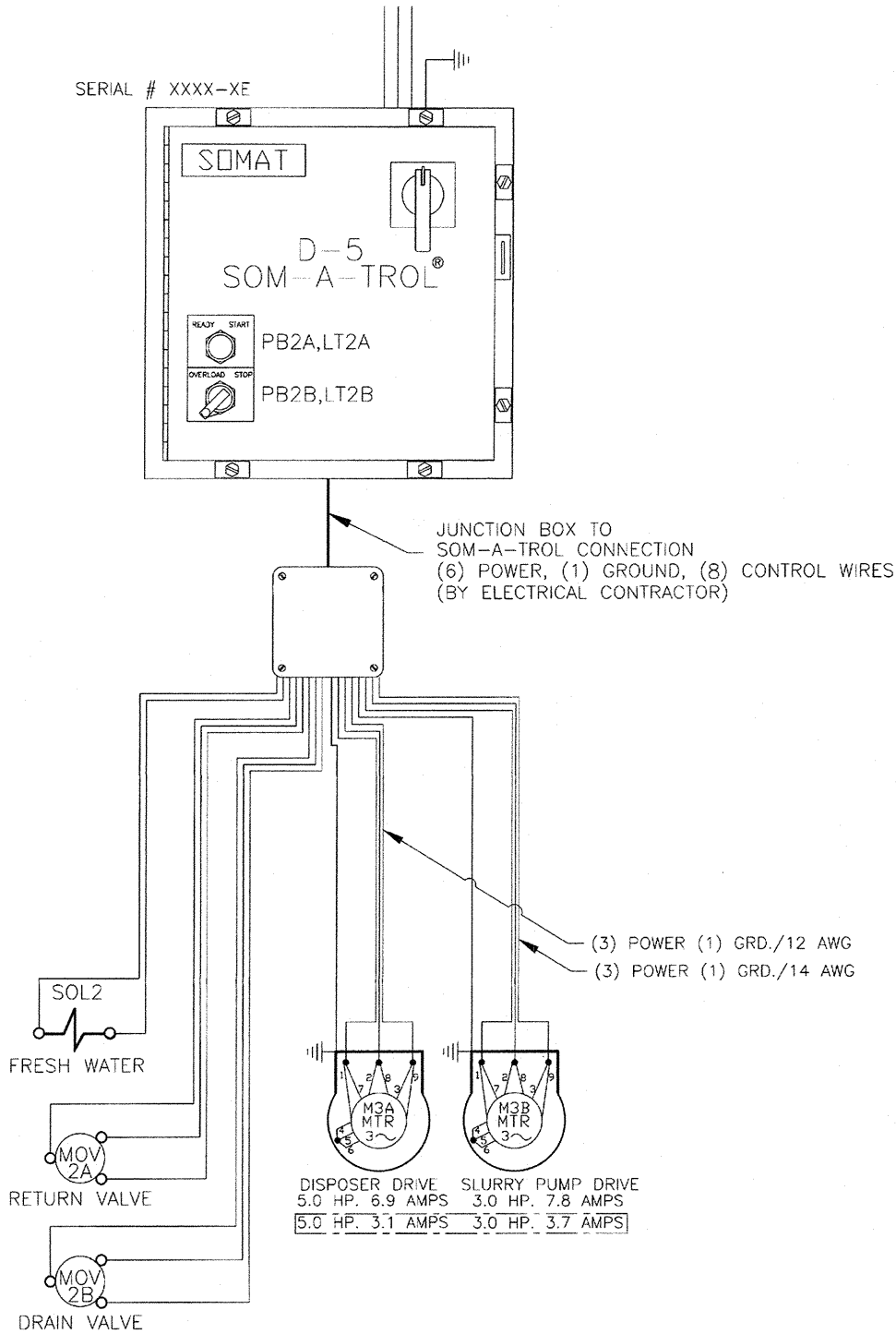
8/3/07

# somat®

## Remote Waste Pulping System

### SOMAT Model: D-5 Disposer

CUSTOMER POWER SUPPLY  
(BY ELECTRICAL CONTRACTOR)  
208V-3 $\phi$ -60Hz-20 AMPS  
460V-3 $\phi$ -60Hz-15 AMPS



TRADEMARK NOTICE: SOMAT, HYDRA EXTRACTOR, SOM-A-TROL, SOM-A-PRESS, SOM-A-SYSTEM are registered trademarks of Somat Company.

**Somat Company**

Division of ITW Food Equipment Group LLC  
165 Lancaster, PA 17601 USA  
Tel: 717-397-5100 800-237-6628  
Fax: 717-291-08776/14/05  
[www.somatcompany.com](http://www.somatcompany.com)