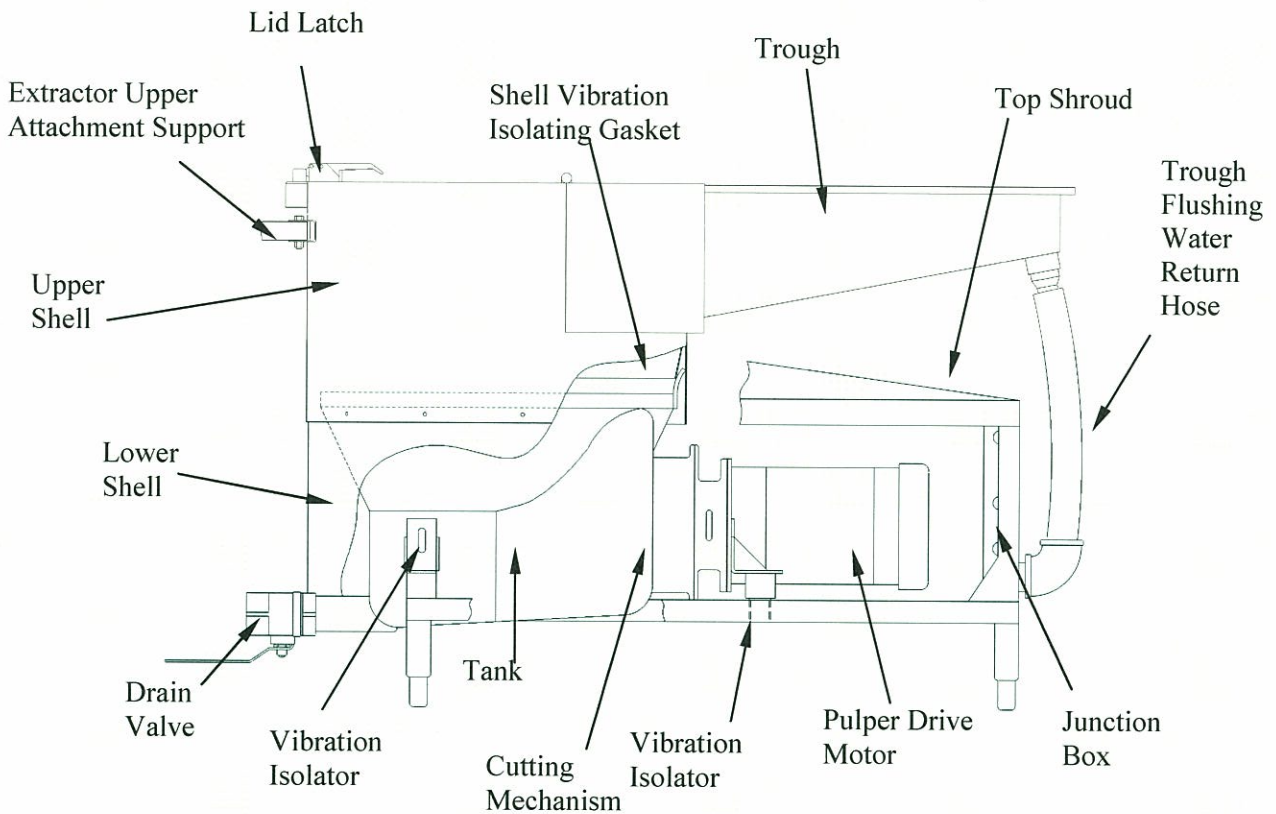


SUPER 60, CLOSE-COUPLED, PULPER / EXTRACTOR

GENERAL DESCRIPTION - PULPER

The Super 60 Pulper represents advancement in pulping technology incorporating a number of features to increase efficiency and reduce operator adjustments. The overall size is smaller requiring less floor space and the height is lower reducing operator fatigue. Some of the revised components include: a one piece cast stainless steel tank, a horizontally mounted single drive motor with a directly coupled cutting / pumping mechanism, replaceable pumping vanes, integral valves and piping, adjustable rate overflow, automatic water level control, foot operated drain valve, vibration isolation system, tubular stainless steel frame, integral junction box, full polished stainless steel shrouding and a removable trough. A cross-section of the Super 60 Pulper identifies these items.



SUPER 60 PULPER, CLOSE-COUPLED, CROSS-SECTION