



HYDRA-EXTRACTOR[®] HE-9S

DESCRIPTION

GENERAL - The SOMAT Hydra-Extractor[®]:

The shell weldment, Figure 1 (Item A) serves as the basic structure of the Hydra-Extractor[®]. An access cover (Item B) is provided for cleaning and inspection. The head assembly (Item C) is secured to the top of the shell. The screw assembly (Item D) is supported by a bushing and pin at the bottom of the shell, and by a bearing in the head assembly. The screw is surrounded by a perforated screen (Item E) which permits water to drain as pulp is conveyed upwards. A plug cutter (Item F) is located on the upper end of the screw assembly. The screw is driven by a TEFC motor (Item H) and speed reducer (Item G). The complete Hydra-Extractor[®] is supported on a stand (Item J).

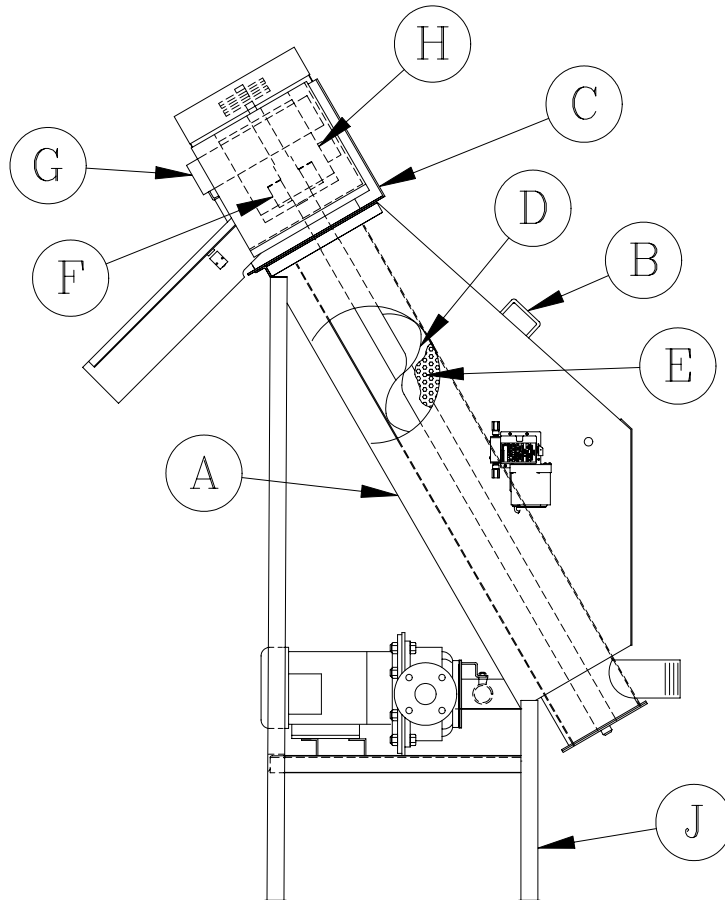


FIGURE 1. HYDRA-EXTRACTOR[®] GENERAL ARRANGEMENT

MAINTENANCE

PERIODIC MAINTENANCE AND INSPECTION - These procedures consist primarily of regularly scheduled cleaning and inspections. The time intervals cited are based on normal use of the SOMAT[®] unit: approximately **six hours per day**, seven days per week. Equipment operating more than this or in severe service will require more frequent inspection/maintenance.

Continued adherence to these inspections will provide adequate lead time when ordering spare parts, thereby minimizing unnecessary and costly down-time.

LUBRICATION CHART

UNIT	FREQUENCY	TYPE OF FITTING	LUBRICANT
Hydra-Extractor [®] Speed Reducer	6 months to 1 year	Oil fill plug	Amer. Worm Gear Oil (Amoco) Gear Oil 629 (Mobil)
Hydra-Extractor [®] top bearing	Once per month	Zerk fitting	Water repellent grease

INSPECTION CHART

	DAILY	WEEKLY	MONTHLY	QUARTERLY
1. GENERAL (Overhaul yearly)				
a. Check exterior finish for corrosion.				X
2. EXTRACTING UNIT				
a. Check screw and brush for wear.				X
b. Check screen for wear.				X
c. Check bottom bushing & Pin Assembly.				X
3. DRIVE				
a. Check reducer for noise and leakage.				X
b. Check bearing and screw shaft for wear.				X
c. Check Drive Belts.			X	