

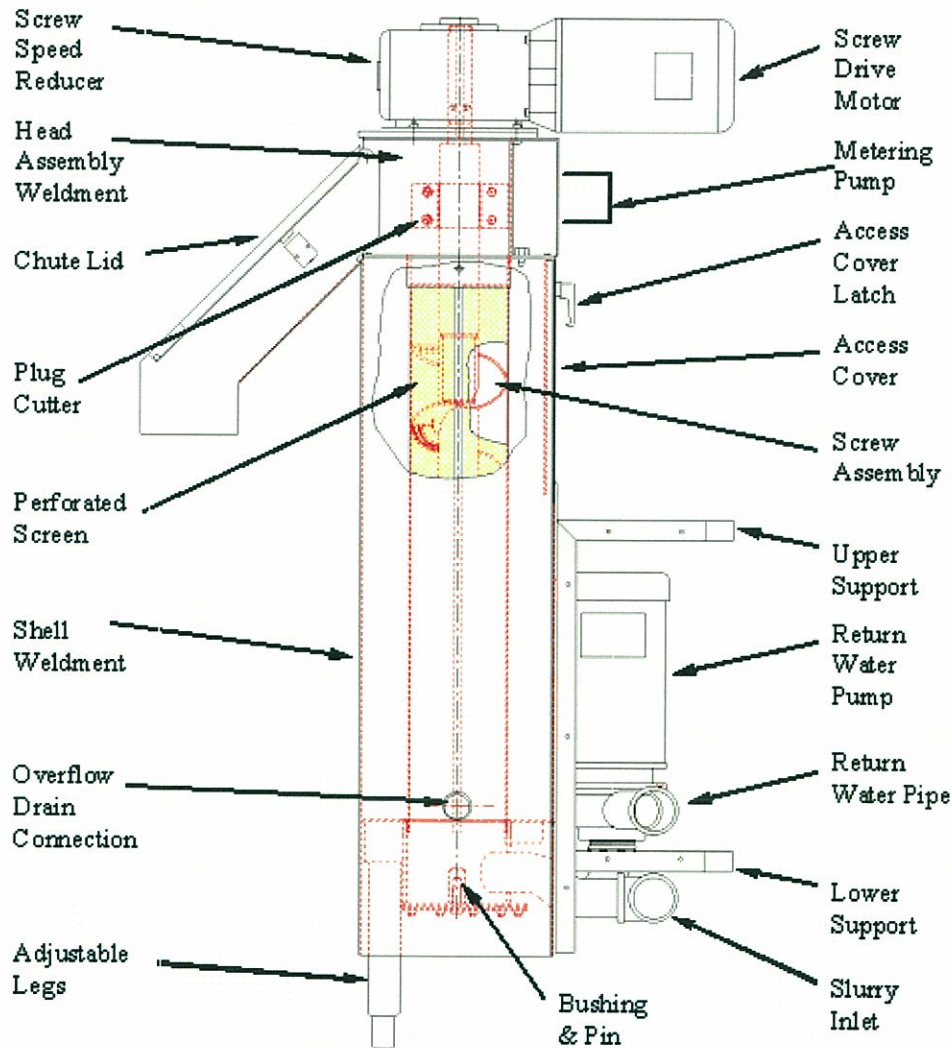
## HE-6CC

### DESCRIPTION

#### GENERAL - The SOMAT<sup>®</sup> Hydra-Extractor<sup>®</sup>:

The shell weldment, Figure 1, (A) serves as the basic structure of the Hydra-Extractor<sup>®</sup>. An access cover (B) is provided in the shell weldment for cleaning and inspection. The head assembly, (C) is a weldment securely bolted to the shell weldment. The screw assembly, (D) is supported by a bushing and pin in the shell weldment, and the speed reducer. The screw assembly is surrounded by a perforated screen (E) which permits water to drain off as the slurry is conveyed through the screw assembly. A plug cutter (F) is located on the upper end of the screw assembly. The screw assembly is driven by a TEFC motor (H) and speed reducer (G). Pulp is discharged by gravity through the chute (J). The complete Hydra-Extractor<sup>®</sup> is supported by two legs (I) and the pulper connections.

Return Water Pump and Drive - Refer to pump Section for pump and drive specifications (not used on all models).



**CLOSE-COUPLED EXTRACTOR, GENERAL ARRANGEMENT**